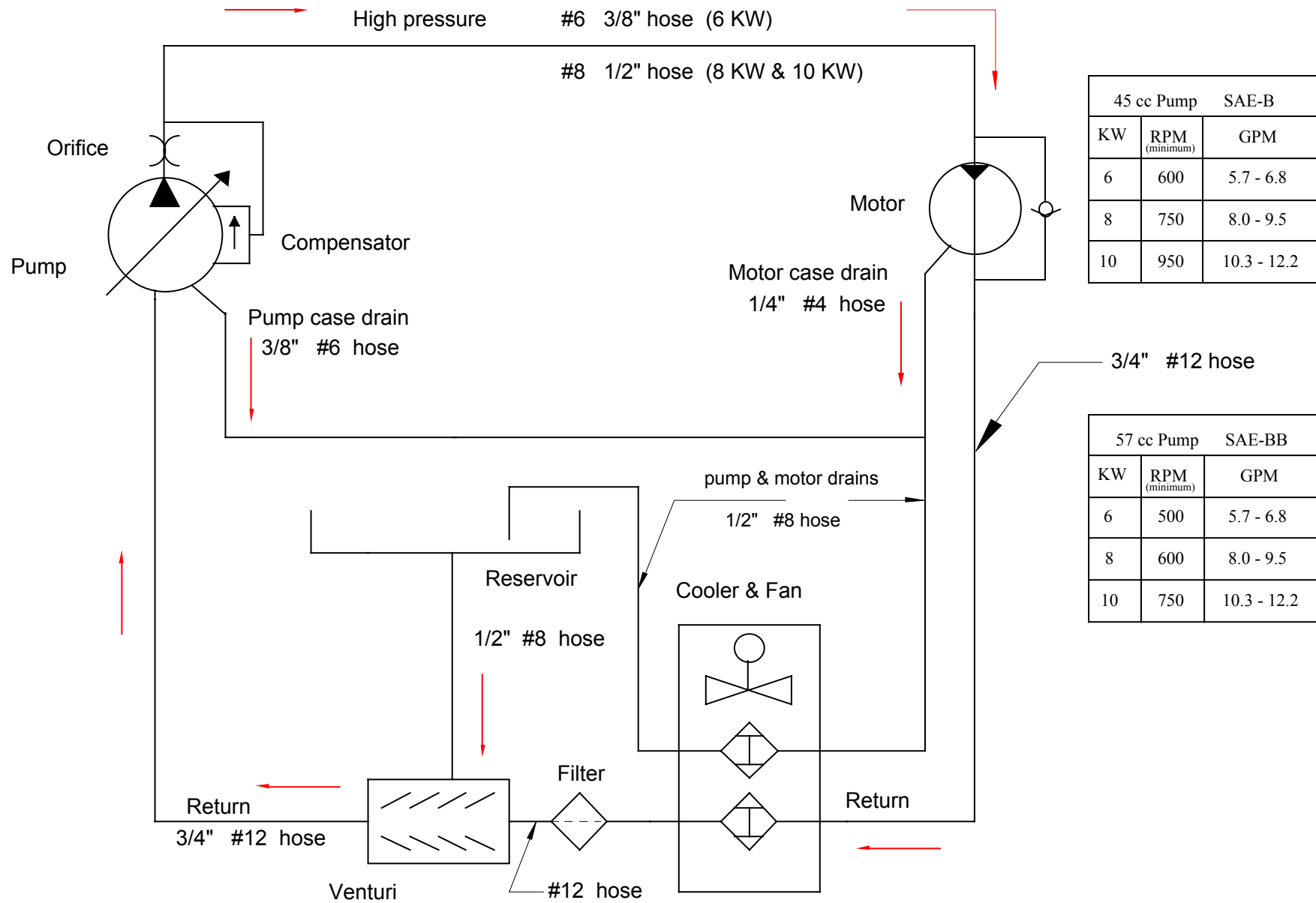


Hart-A-Gen Basic Hydraulic Circuit

CONFIDENTIAL



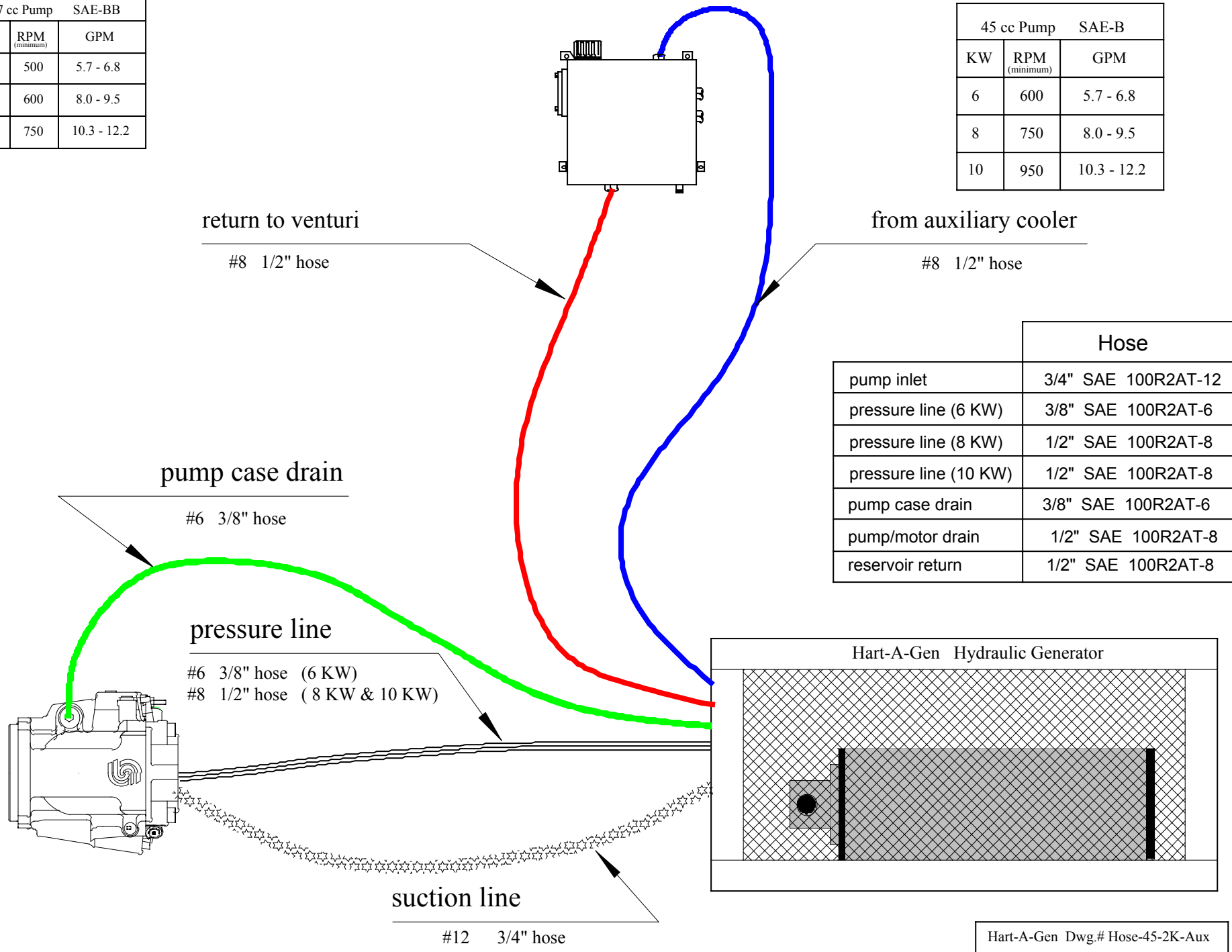
45 cc Pump		SAE-B
KW	RPM (minimum)	GPM
6	600	5.7 - 6.8
8	750	8.0 - 9.5
10	950	10.3 - 12.2

57 cc Pump		SAE-BB
KW	RPM (minimum)	GPM
6	500	5.7 - 6.8
8	600	8.0 - 9.5
10	750	10.3 - 12.2

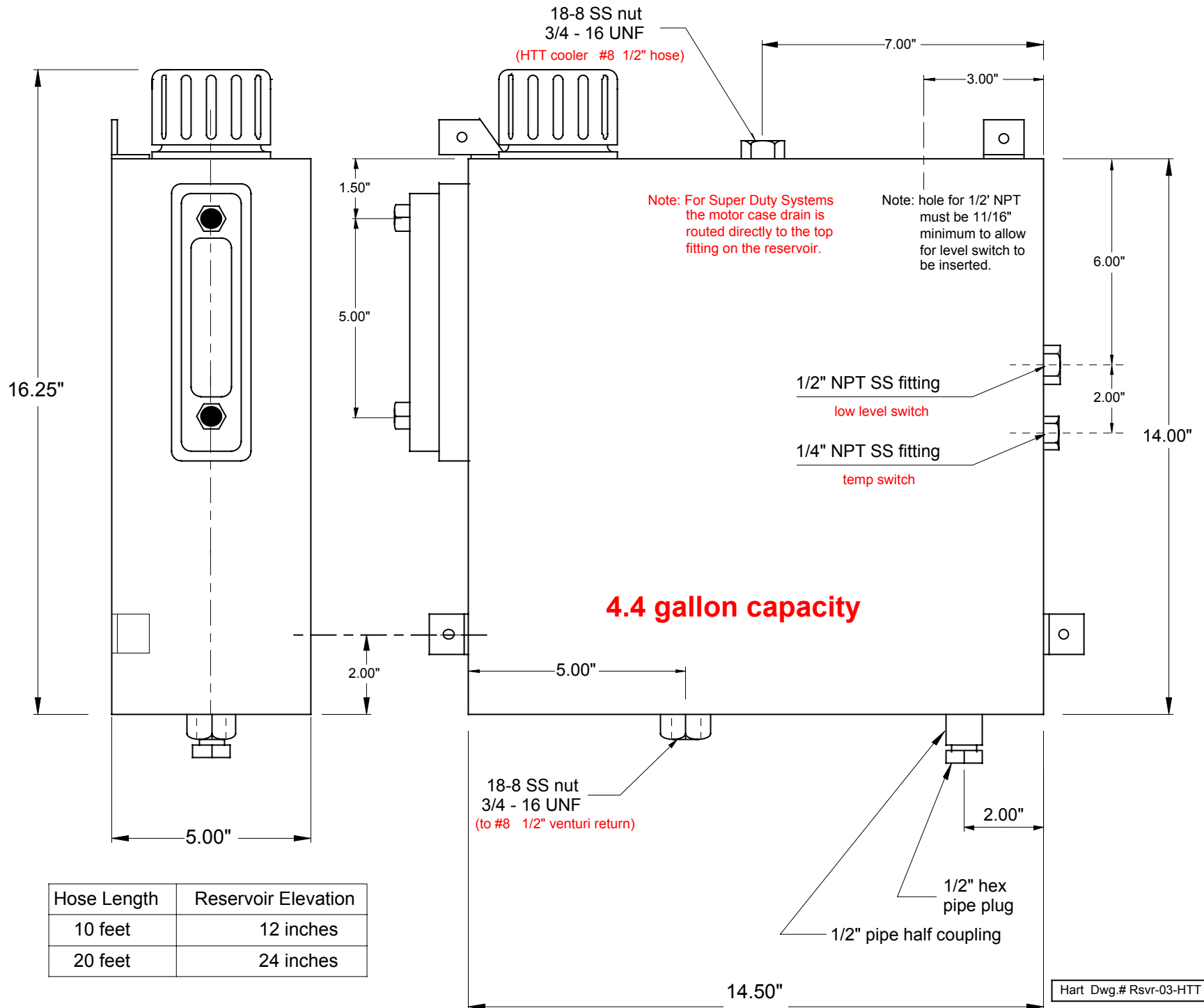
Hart Dwg.# Hyd-ckt-2K'

57 cc Pump		SAE-BB
KW	RPM (minimum)	GPM
6	500	5.7 - 6.8
8	600	8.0 - 9.5
10	750	10.3 - 12.2

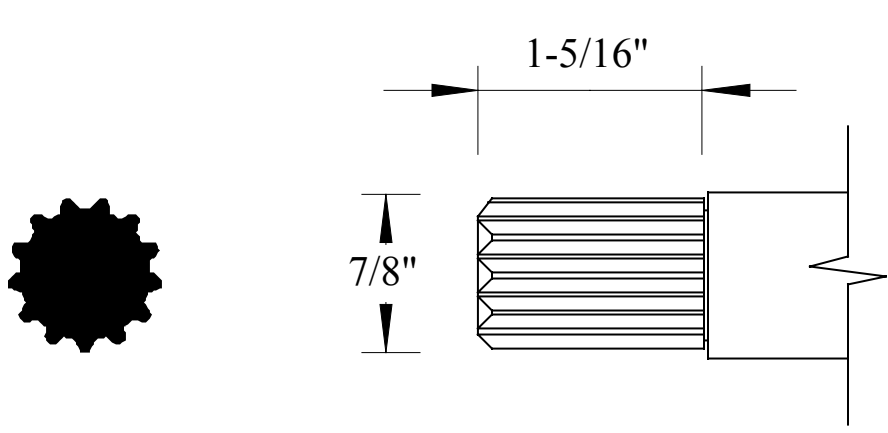
45 cc Pump		SAE-B
KW	RPM (minimum)	GPM
6	600	5.7 - 6.8
8	750	8.0 - 9.5
10	950	10.3 - 12.2



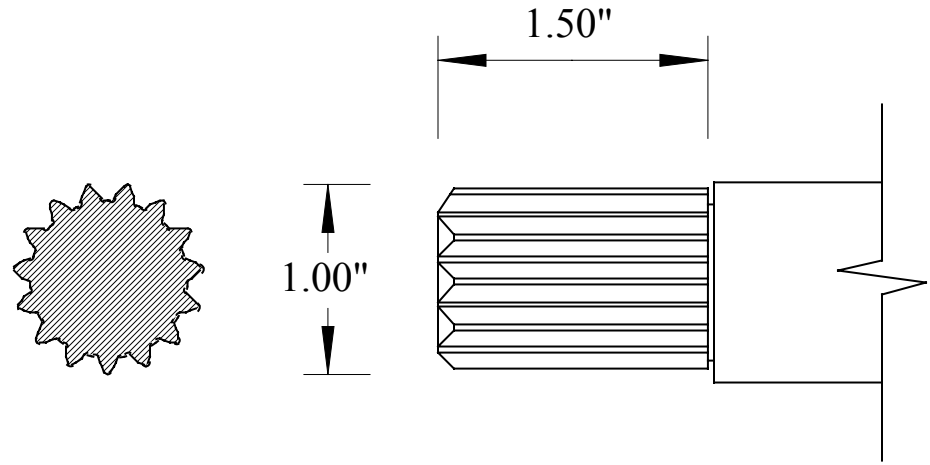
Hart-A-Gen Dwg.# Hose-45-2K-Aux



45 cc Pump Shafts

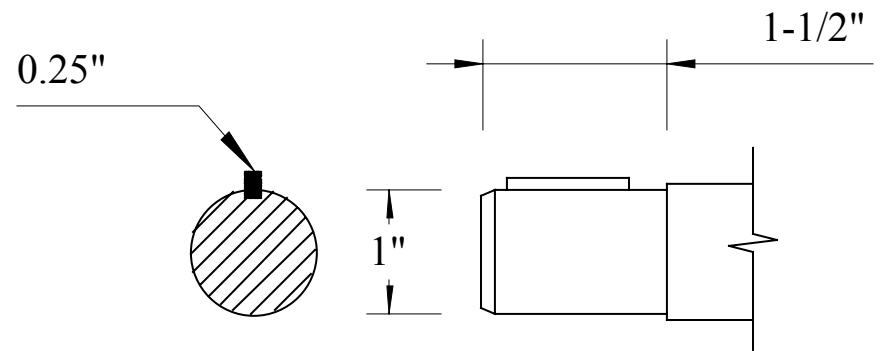


SAE-B pump shaft 7/8" - 13 tooth - 16/32 DP spline



SAE-BB pump shaft 1" - 15 tooth - 16/32 DP spline

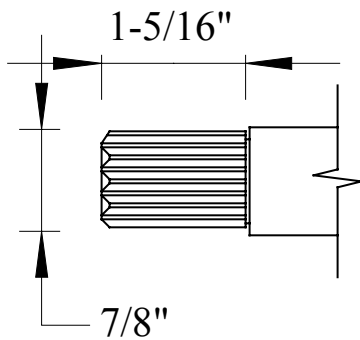
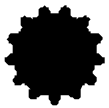
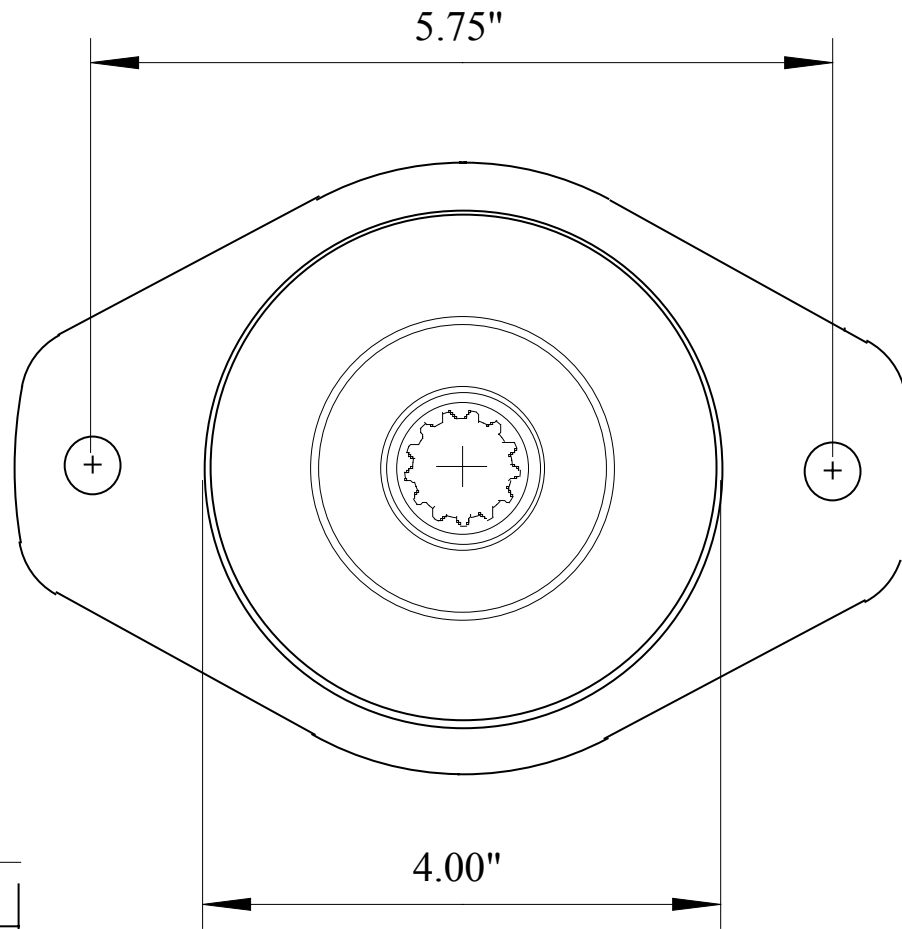
Mounting Pad Size	Shaft Type		Shaft Diameter	Shaft Length	Description
SAE-B	spline		0.875"	1.3125"	13T, 16/32 DP
SAE-BB		round	1.00"	1.50"	Keyed Parallel SAE 1"
SAE-BB	spline		1.00"	1.50"	15T, 16/32 DP



SAE-BB pump shaft 1"- round-keyed shaft

SAE-B Flange Face

(2 bolt)



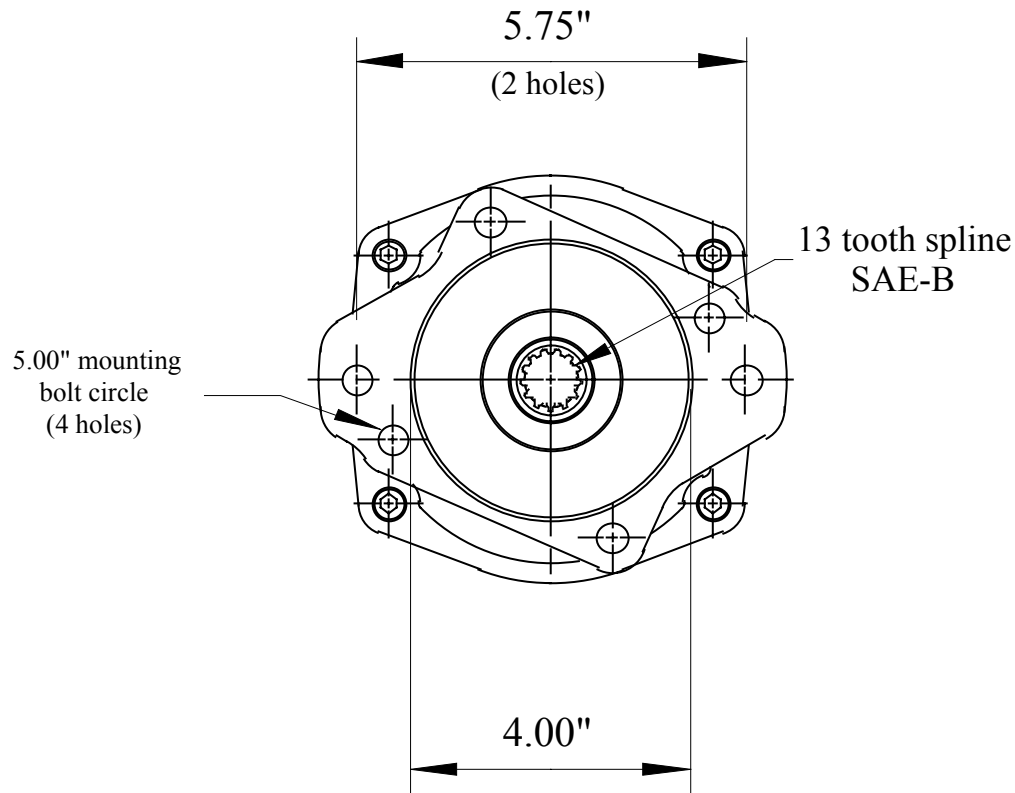
SAE-B pump shaft 7/8" - 13 tooth - 16/32 DP spline

Hart Dwg. SAE-B-1

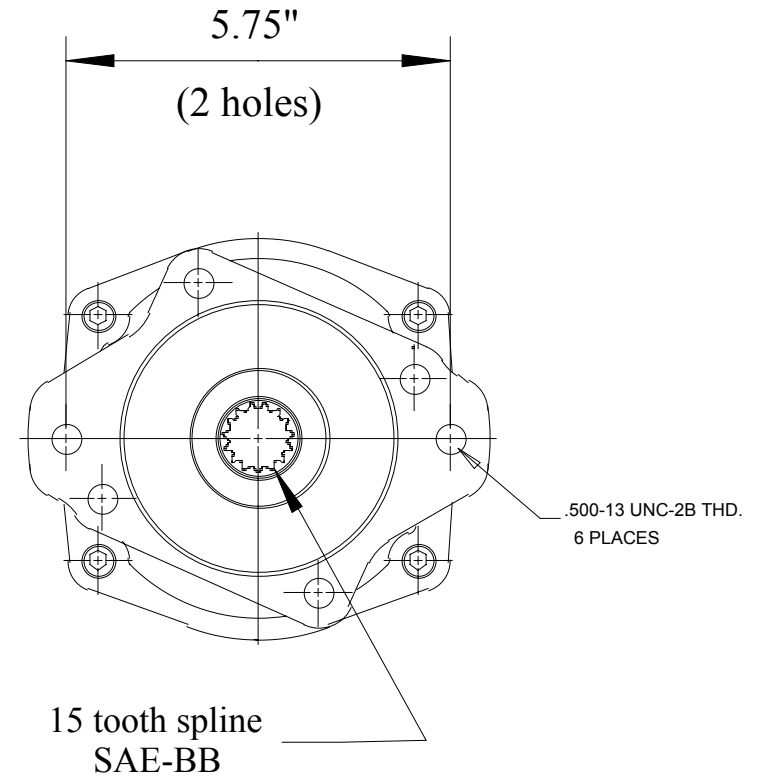
Chelsea PTO Flange

SAE-B

(2 or 4 bolt)



PUMP ASS'Y "XK"
S.A.E. CLASS "B" PUMP MOUNTING

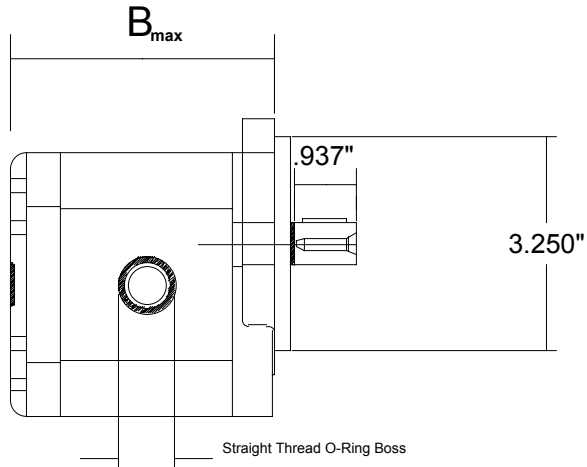


The 57 cc pump does not work with MD-3060 or HD-4060 transmissions in "AF" configuration.

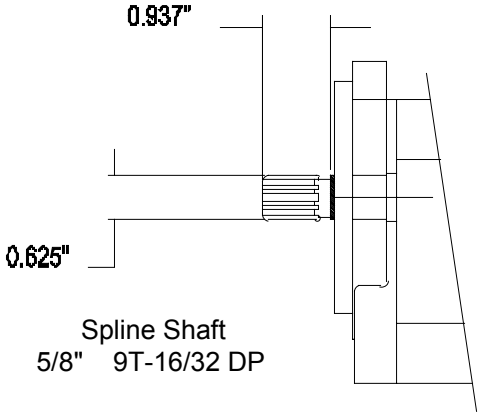
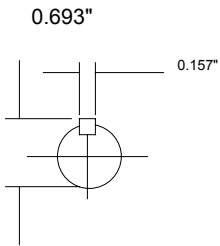
PUMP ASS'Y "AF"
S.A.E. CLASS "BB" PUMP MOUNTING

SNM2 Motor

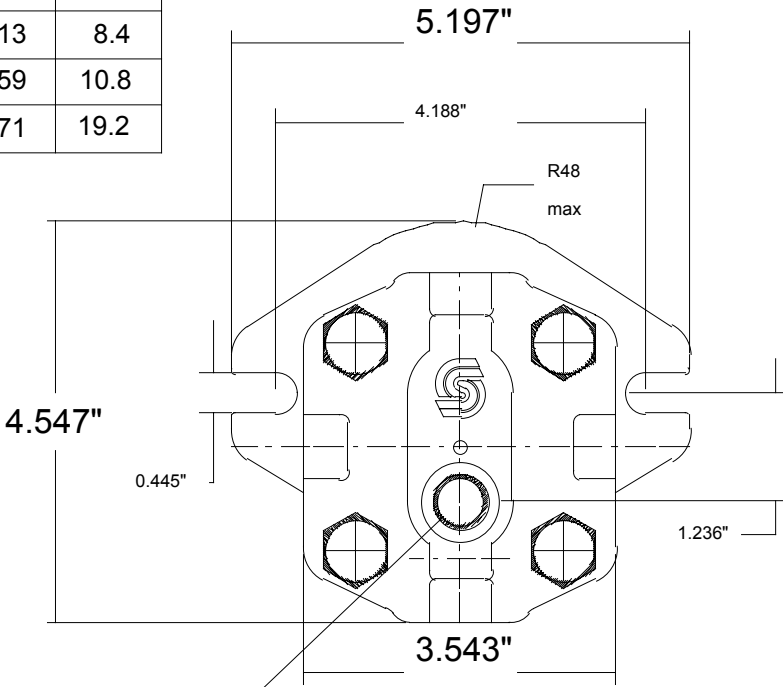
Motor	B _{max}	cu. in.	CC
SNM2/6	3.68"	0.366	6.0
SNM2/8	3.84"	0.513	8.4
SNM2/11	4.00"	0.659	10.8
SNM2/19	4.55"	1.171	19.2



Inlet and Outlet are
7/8 - 14UNF-2B



SAE J498-9T-16/32DP



9\16-18UNF-2B
ST.O-RING BOSS
DRAIN PORT

Hart Dwg.#SNM2-key & spline